

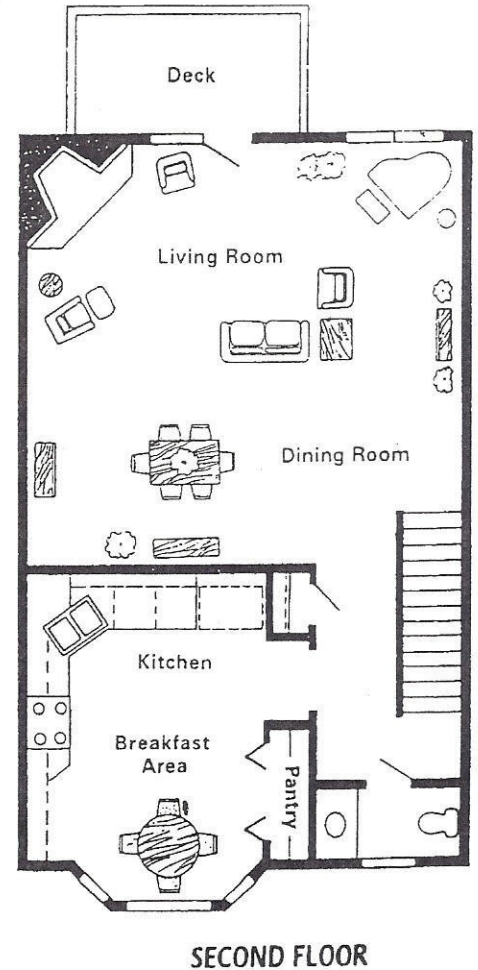
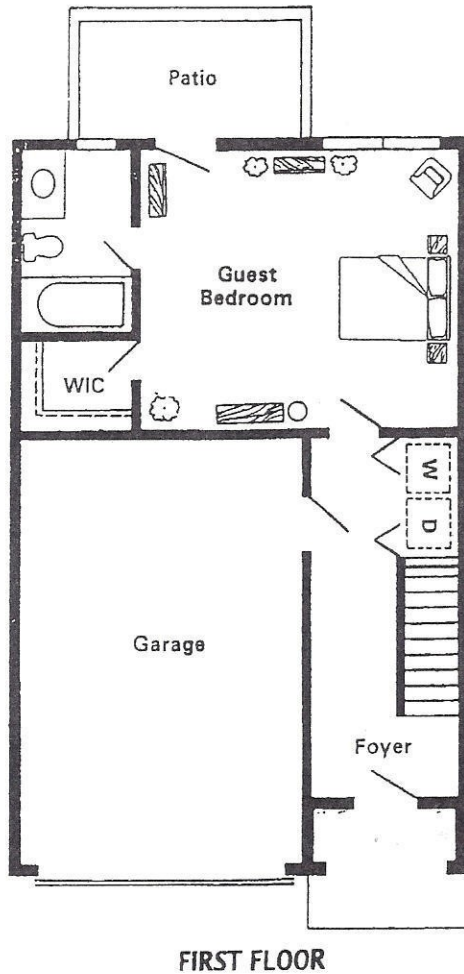
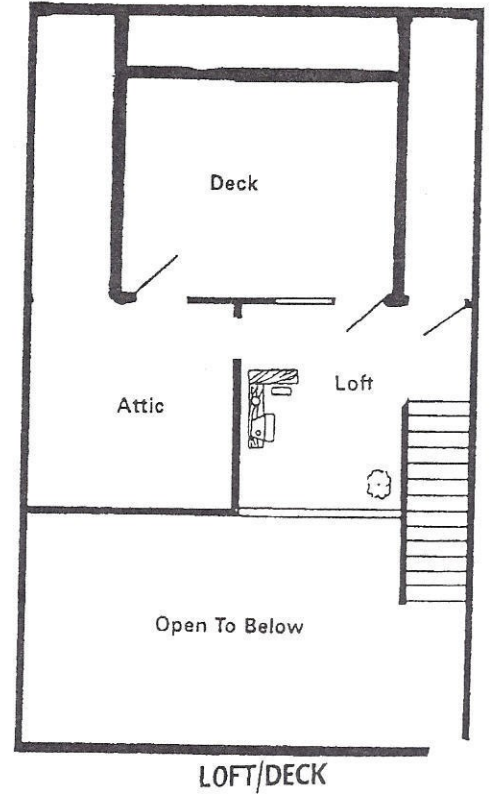
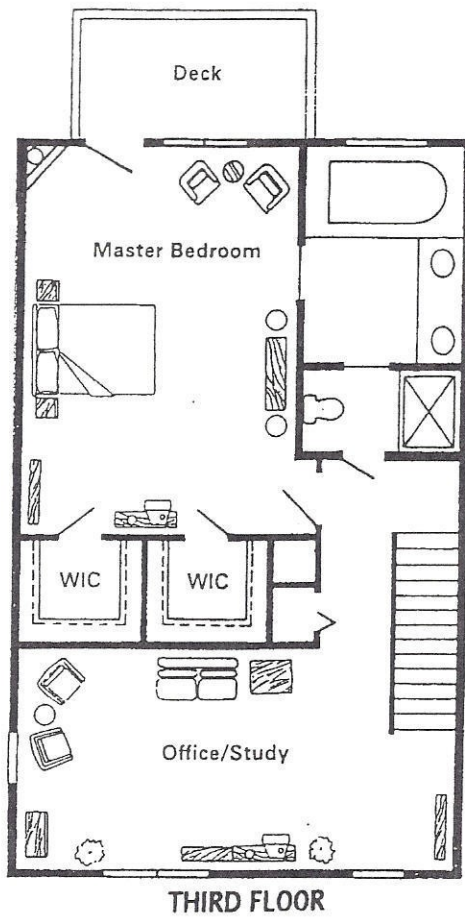


**Marina
Townhomes**

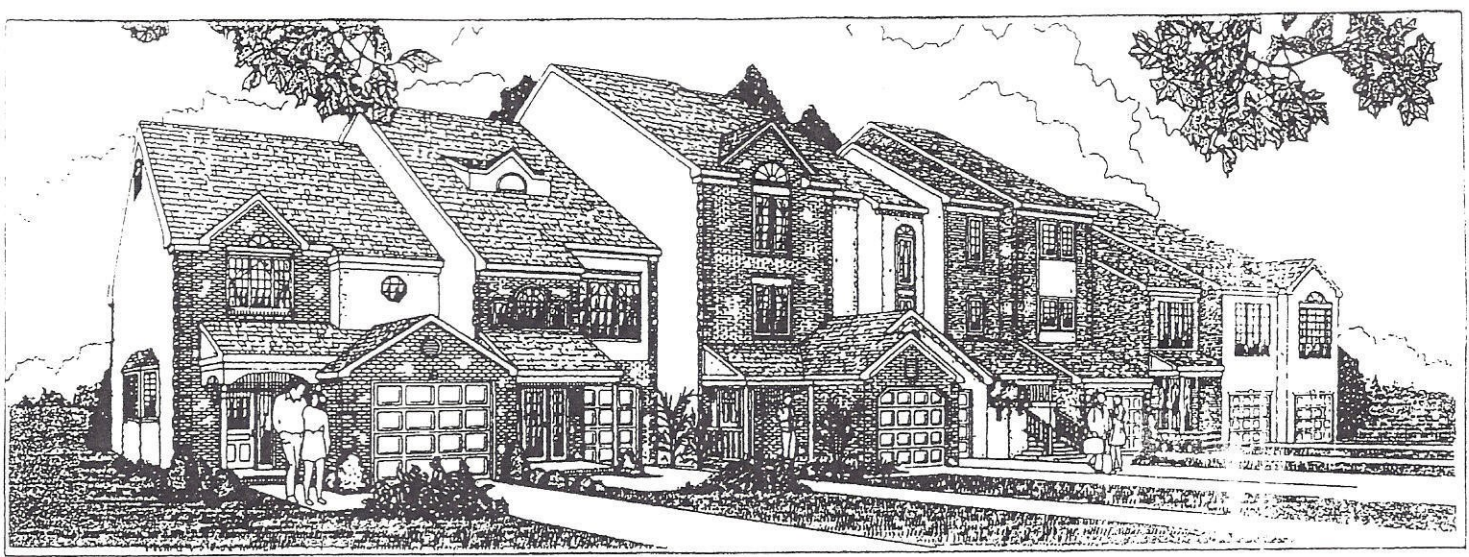
“Tallstar”

**Overlooks Marina
and the
Chesapeake Bay**

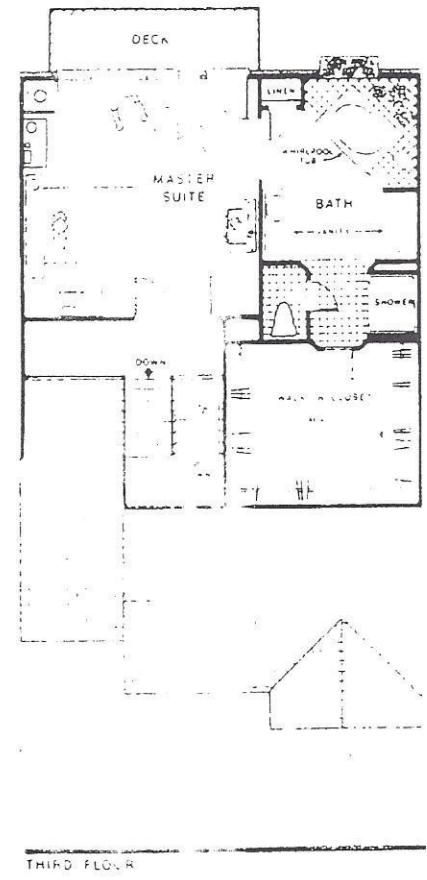
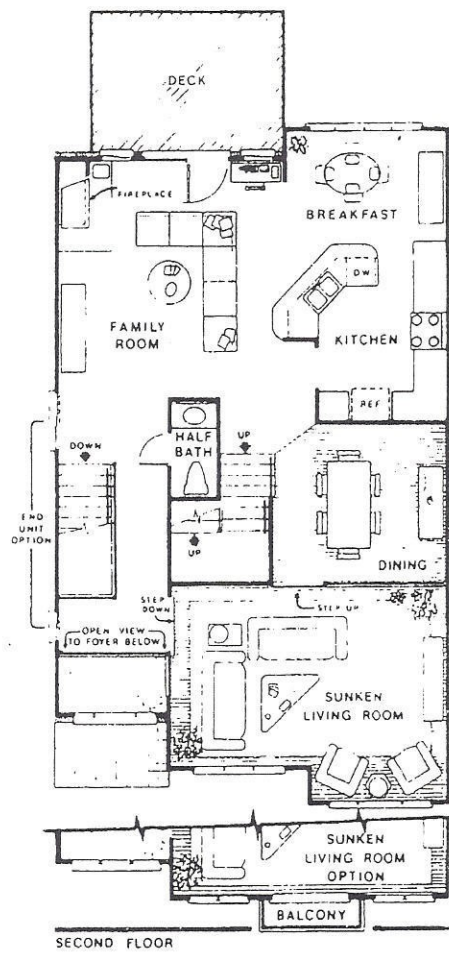
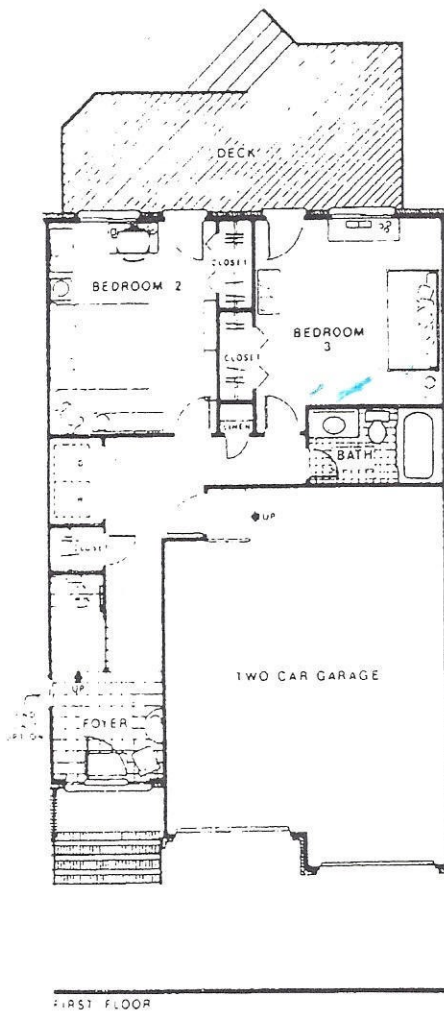
**Two Bedrooms plus Den
2300 Sq.Ft. (approx.)**



Prices subject to change without notice
Square Footage is approximate



The Clipper

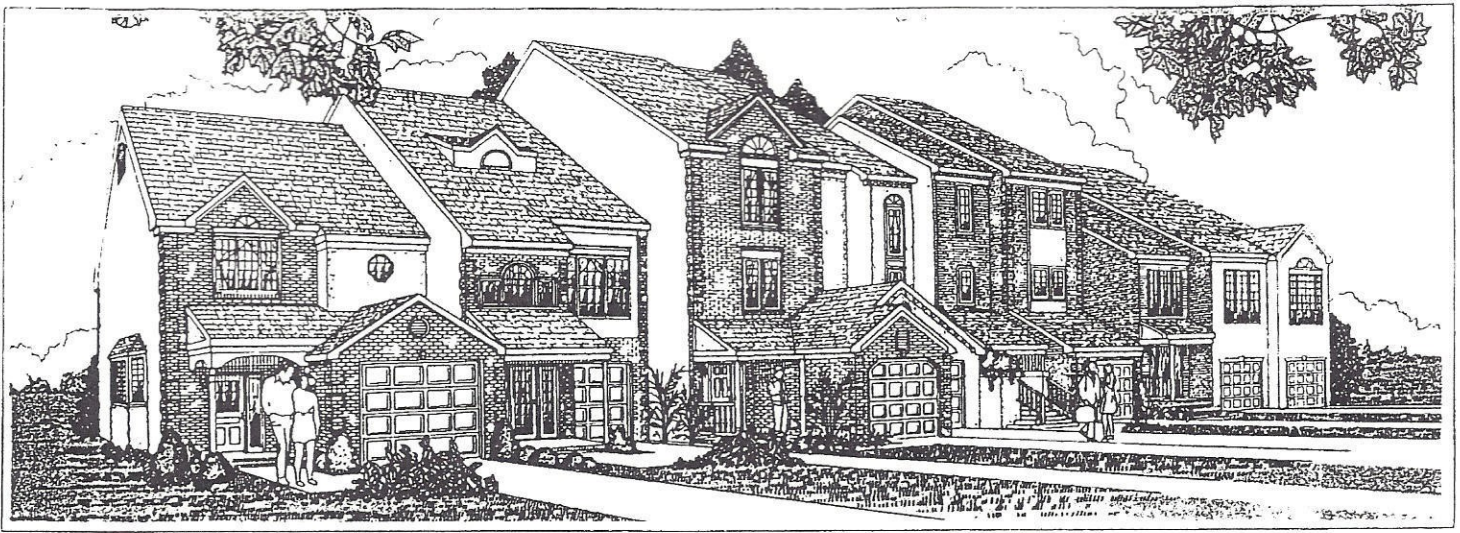


Relax in the luxury of our three story, three bedroom, two-and-one-half bath condominium... the Clipper.

- Fireplace in family room
- Deck or patio on each floor
- Whirlpool tub in master bath
- Dome ceiling and fan in kitchen
- Insulated Pella windows
- Two car garage complete with electric door openers
- Energy efficient heat pump heating and cooling system
- Original Hunter ceiling fans in family room and master suite

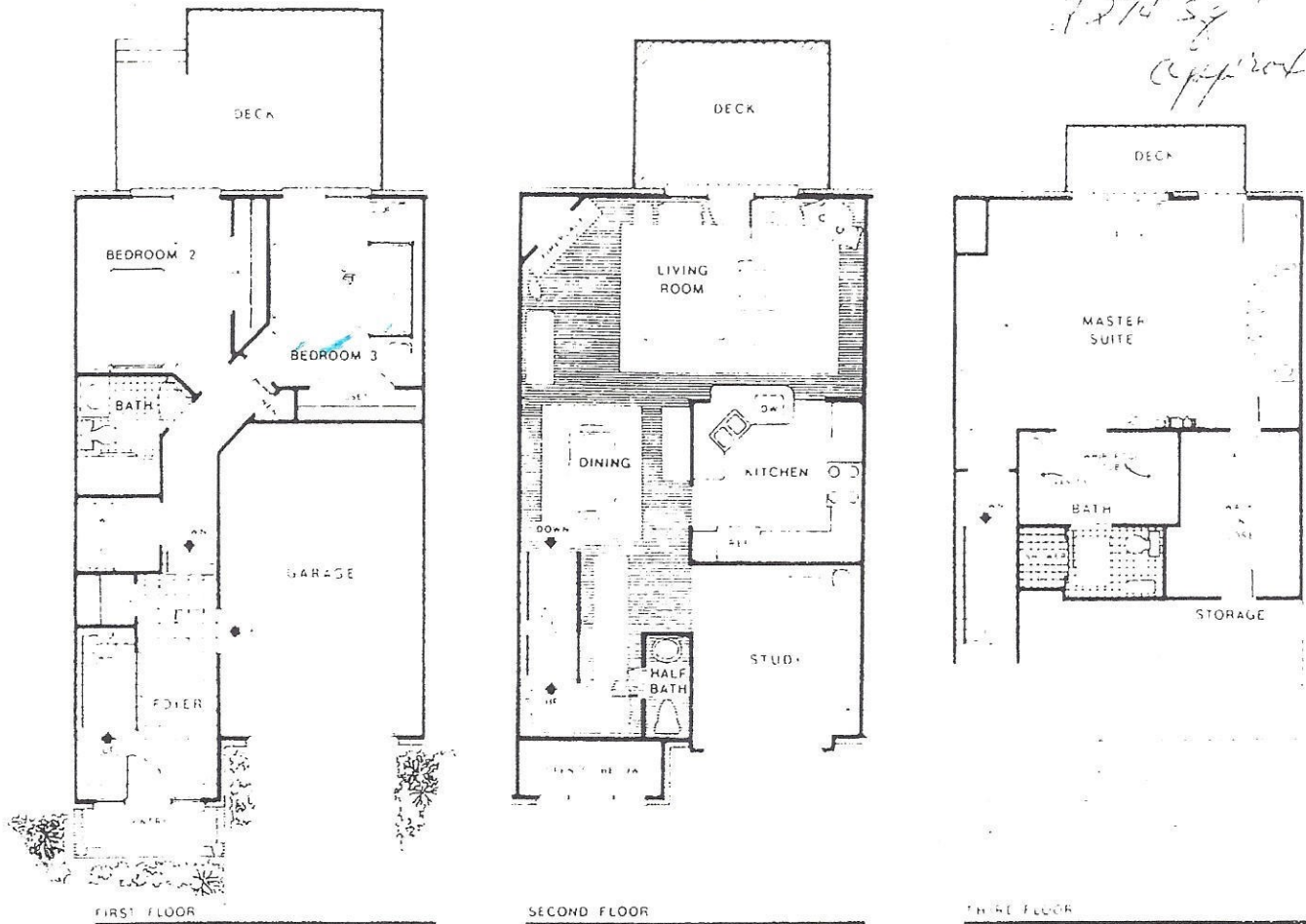
- Jenn Aire kitchen range, dishwasher, trash compactor and disposal
- Electric door locks on front door with intercom system speakers on each floor
- Maintenance free exterior
- Quiet location along Chesapeake Bay
- Vacuflo central vacuum system (optional)
- Fireplace in master suite (optional)

(D)



The Brigantine

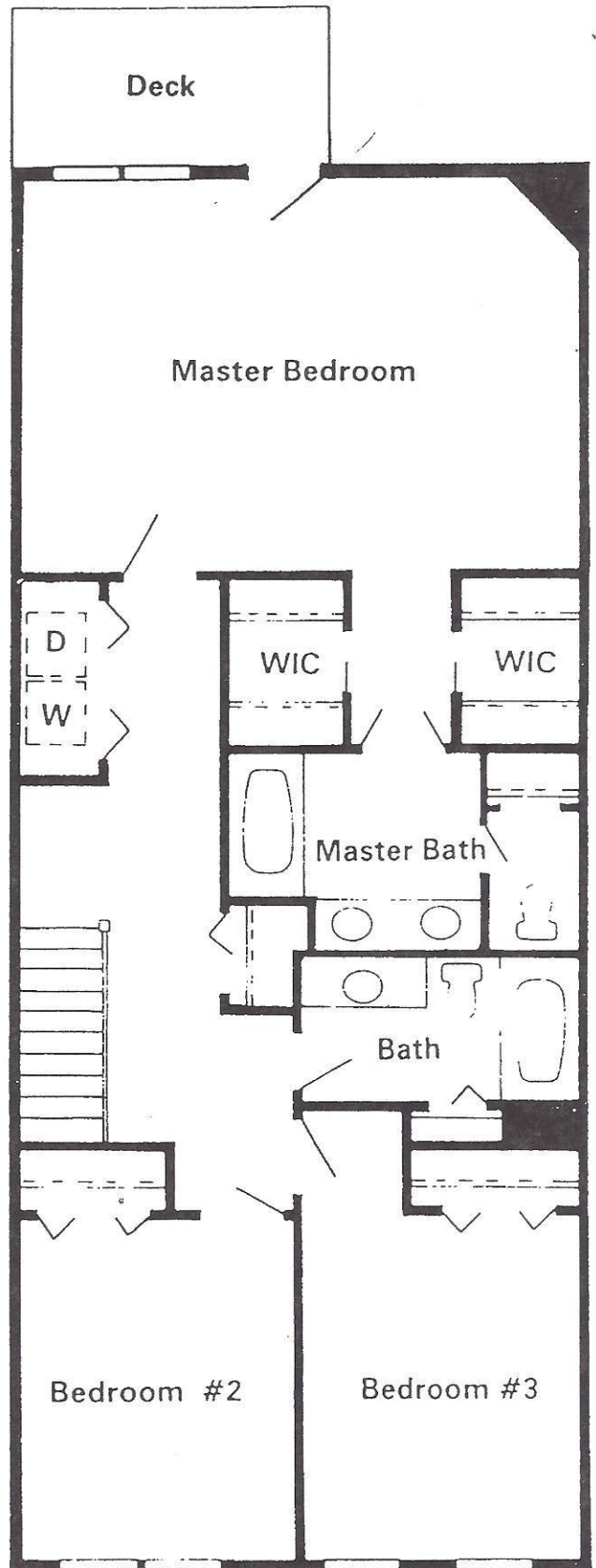
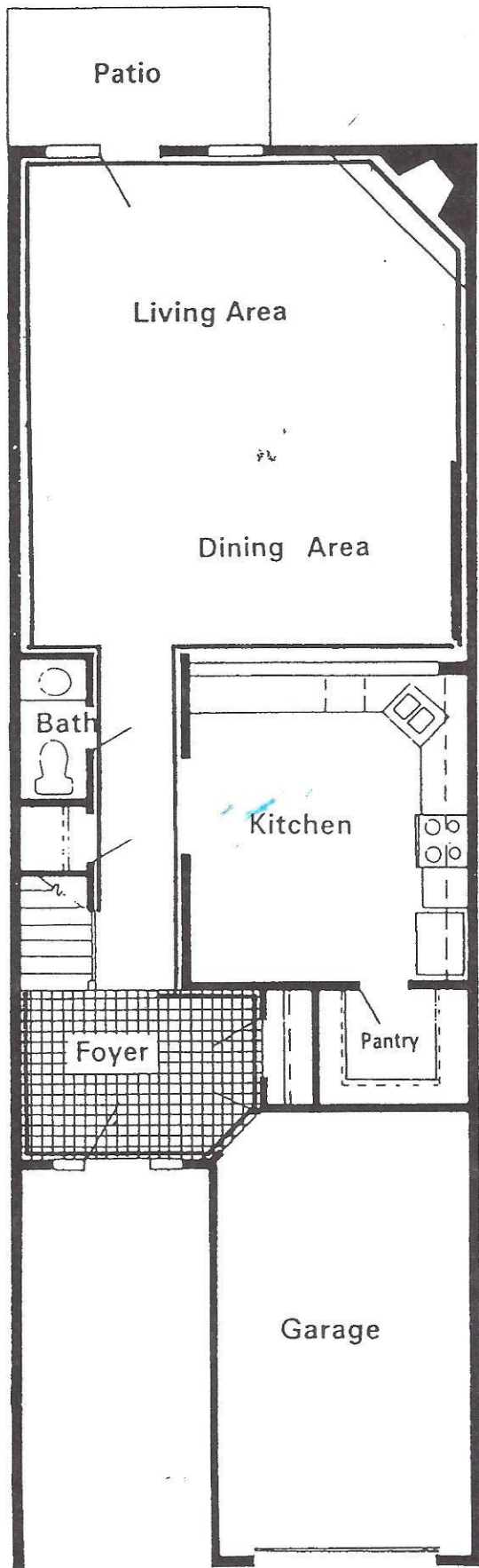
*3,274 sq ft
approx.*



Lounge in the style you prefer in your own home-- a three story, three bedroom two-and-one-half bath condominium... the Brigantine.

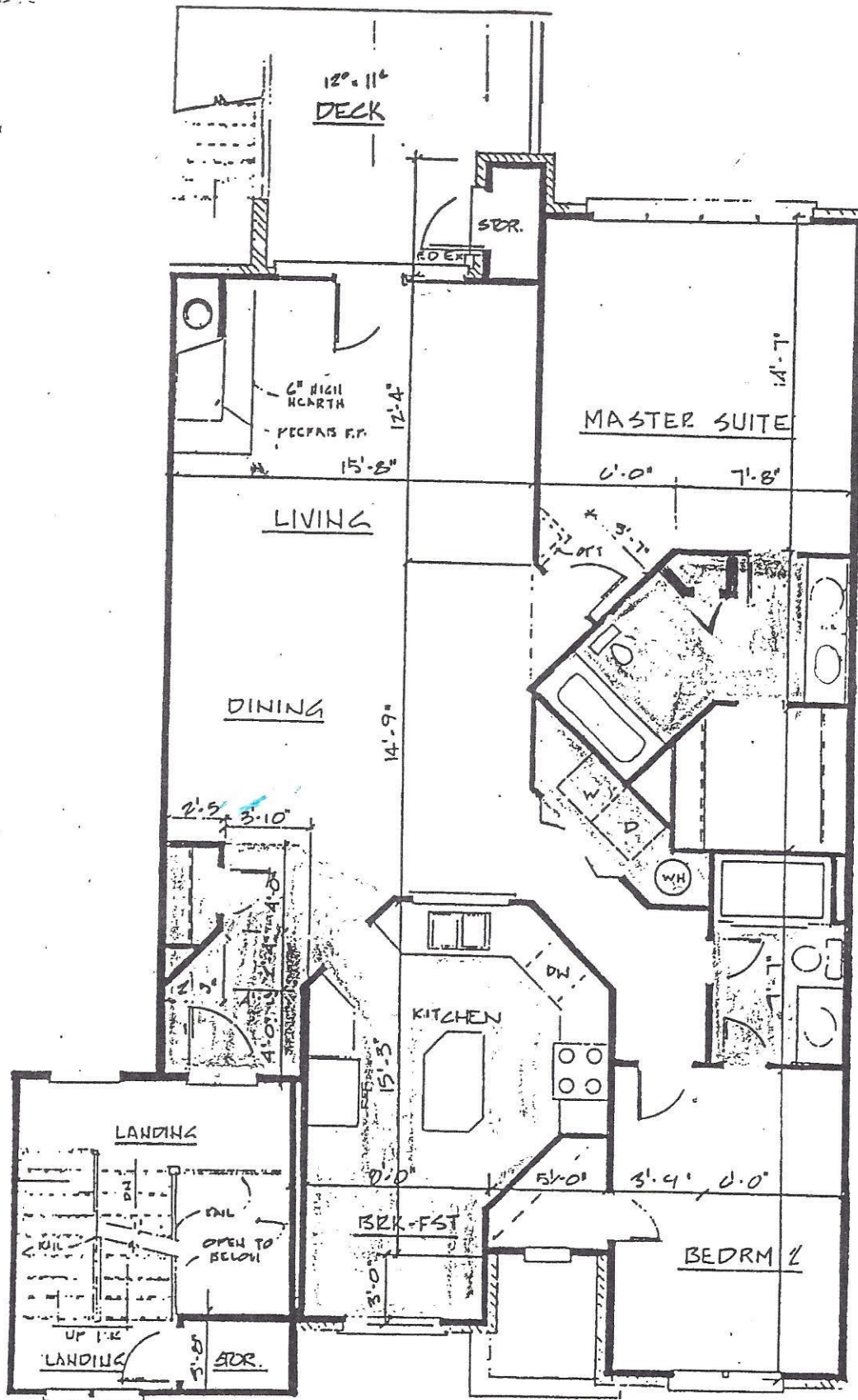
- Fireplace in living room
- Deck or patio on each floor
- Whirlpool tub in master bath
- Dome ceiling and fan in kitchen
- Insulated Pella windows
- One car garage complete with electric floor opener
- Energy efficient heat pump heating and cooling system
- Original Hahn ceiling fans
- Jenn Air kitchen range, dishwasher, trash compactor and disposal
- Electric door locks on front door with intercom system speakers on each floor
- Maintenance free exterior
- Quiet location along Chesapeake Bay
- VacuFlo central vacuum system optional
- Fireplace in master suite optional

(A)



- 2 Piece Crown
- 2 Piece Chair rail

*Catalina
Building #18*



CARPET

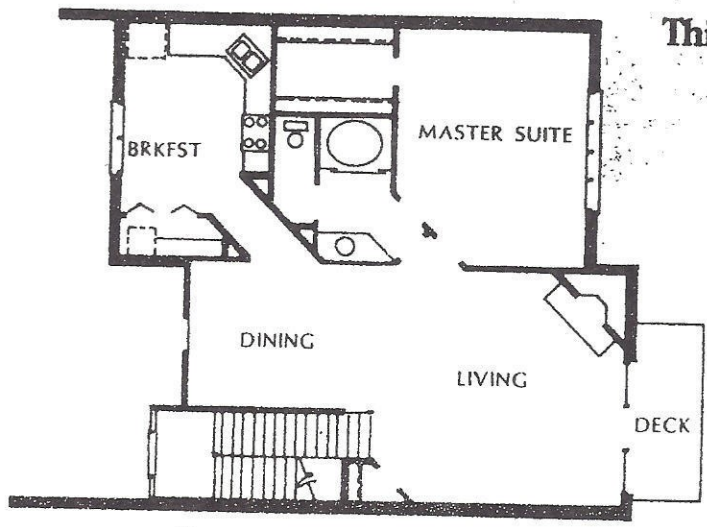
VINYL

Floor plans for illustration purposes only. All measurements are approximate.

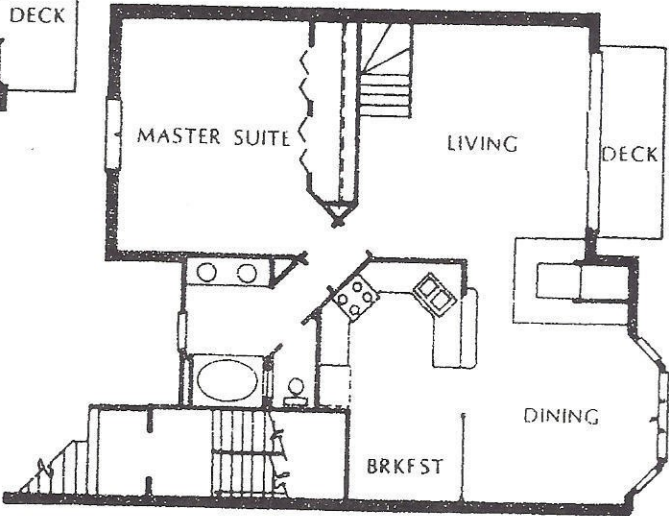
Chesapeake

Building #15

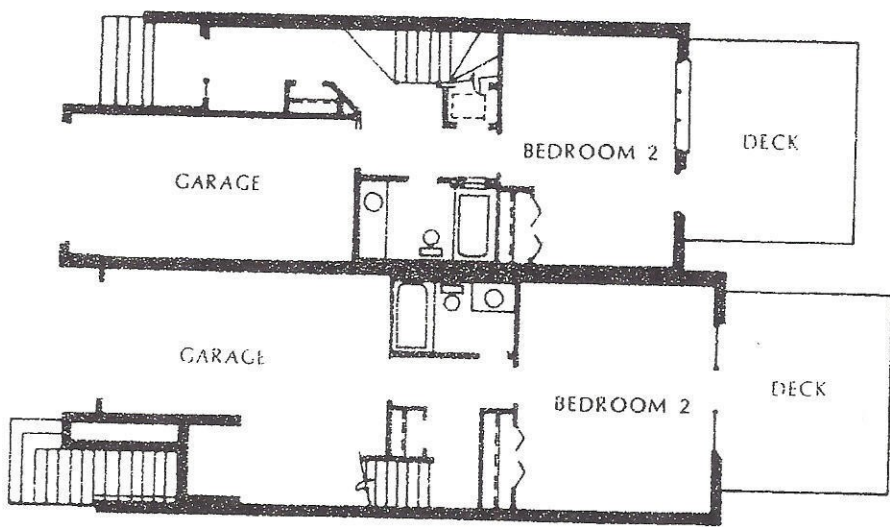




Third Floor - The Sloop



The Yawl - Second Floor



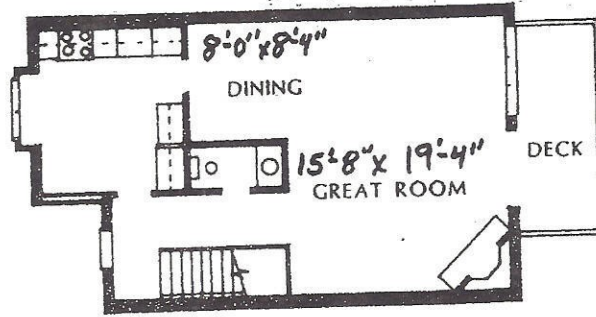
First Floor - The Yawl

First Floor - The Sloop

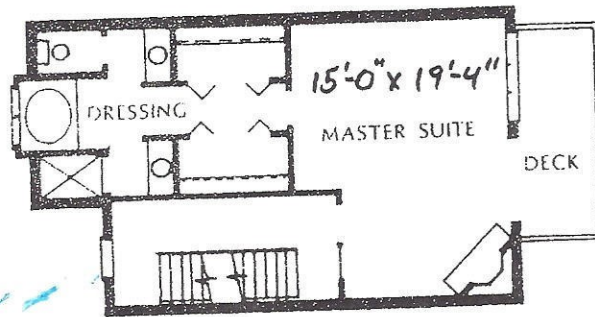
The Yawl and The Sloop

Building #1 3/4 #2

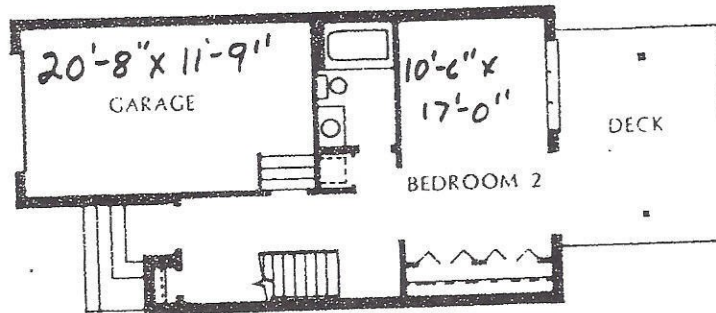
Room Sizes Wall to Wall



Third Floor



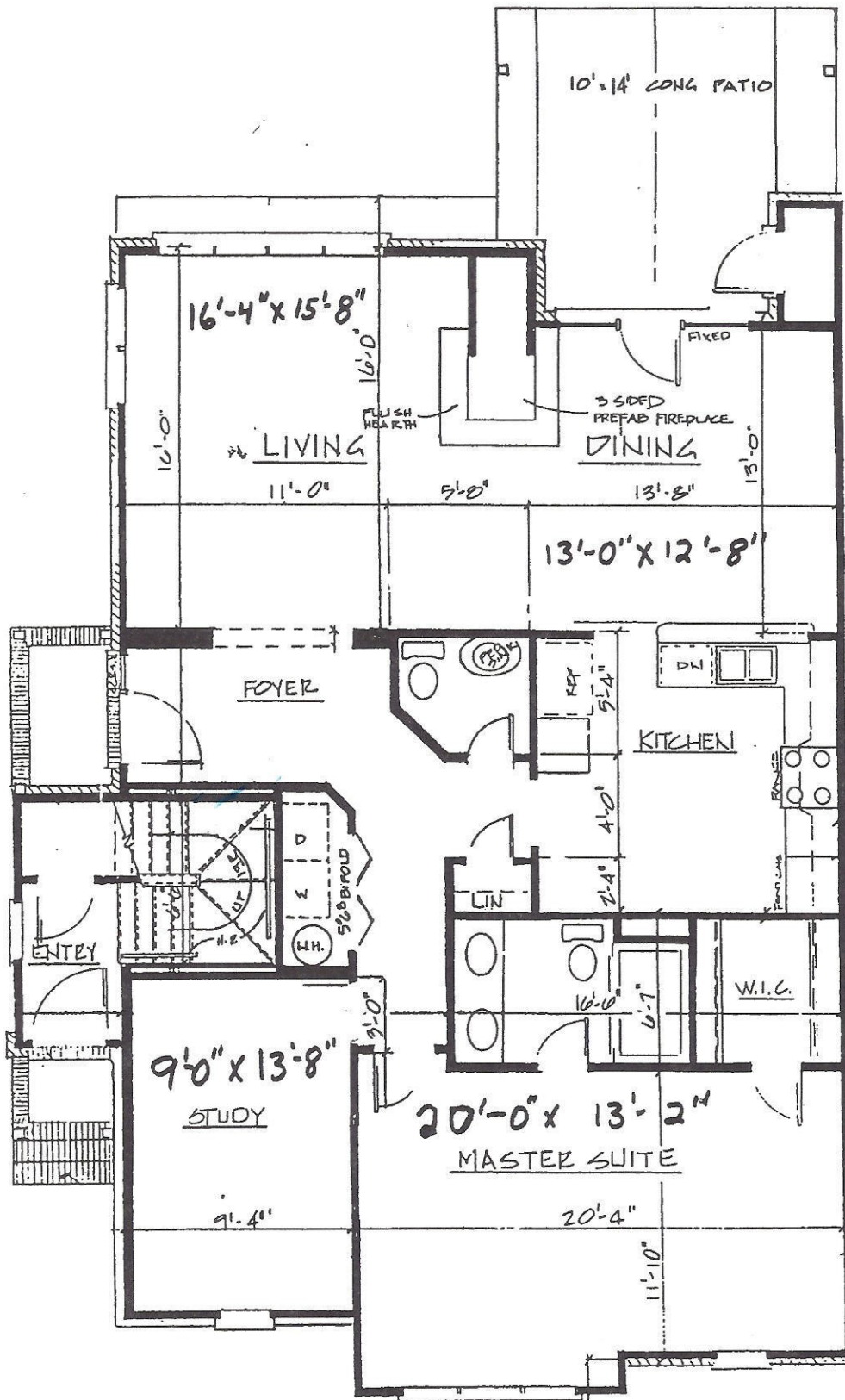
Second Floor



First Floor

The Ketch

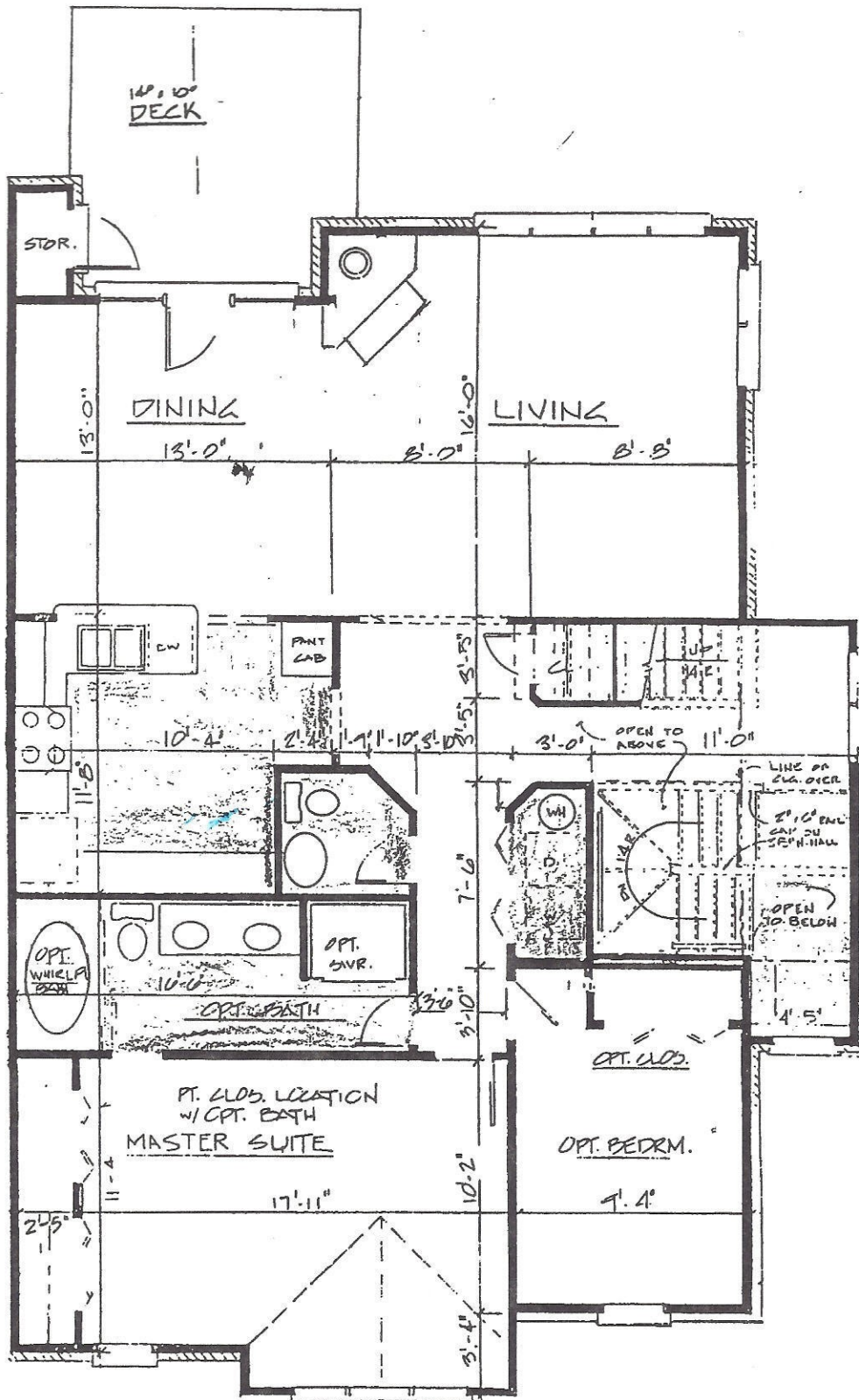
#8 Mizzen Circle



Floor plans for illustration purposes only. All measurements are approximate.

Skipjack





CARPET
 VINYL

Floor plans for illustration purposes only. All measurements are approximate.

Skipjack I

Building #15



Buildings 16-11-18-19-20

HAMPTON ONE

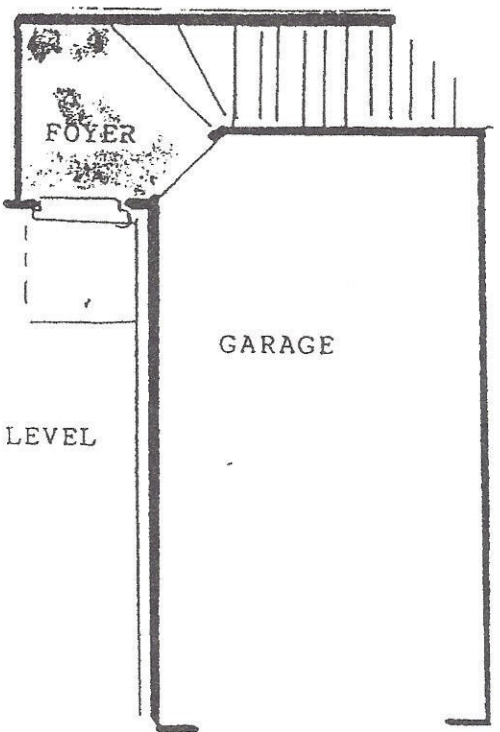
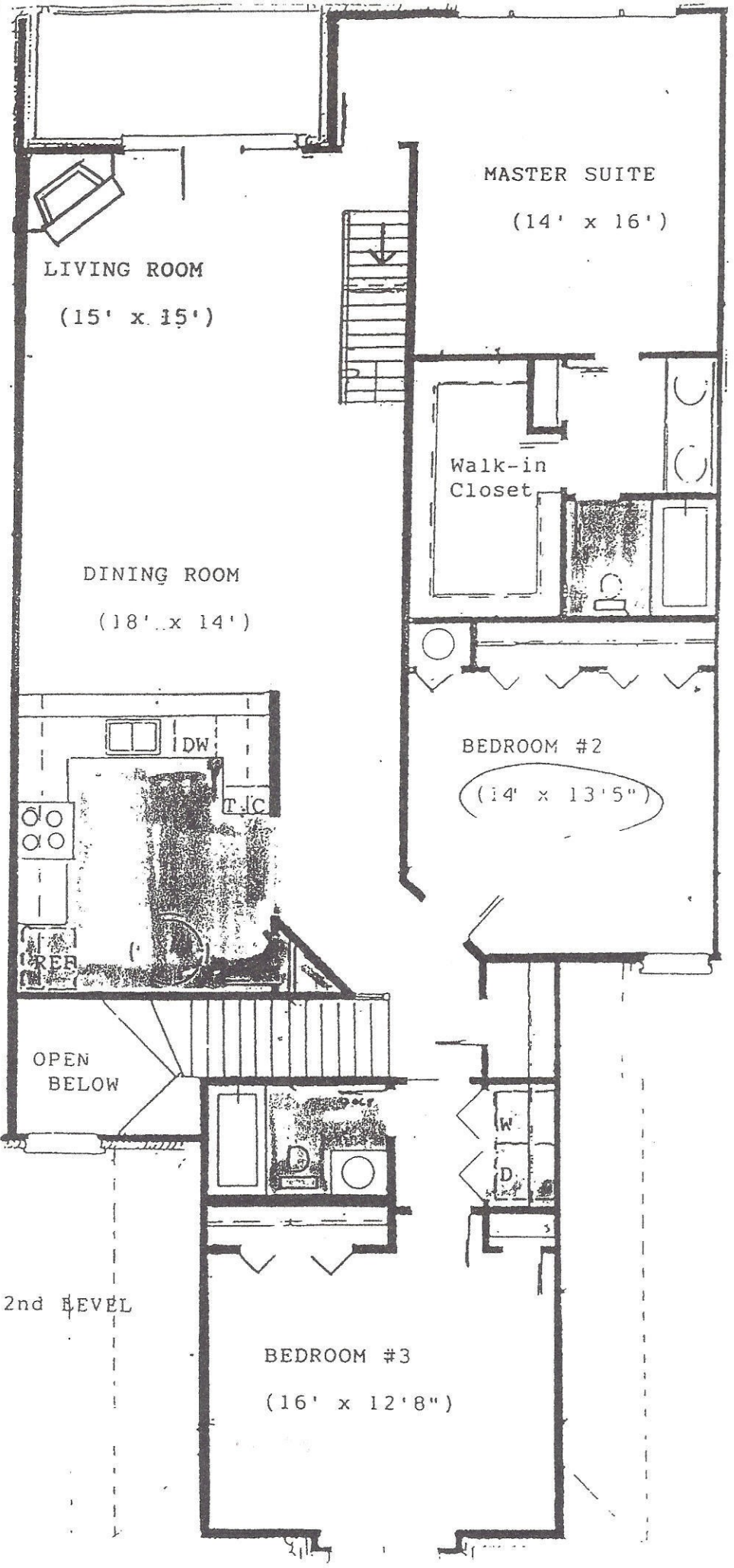
2550 sq. ft.

Above Hampton

[Rectangle] - CARPET

[Dotted pattern] - VINYL

[Stippled pattern] - CERAMIC TILE

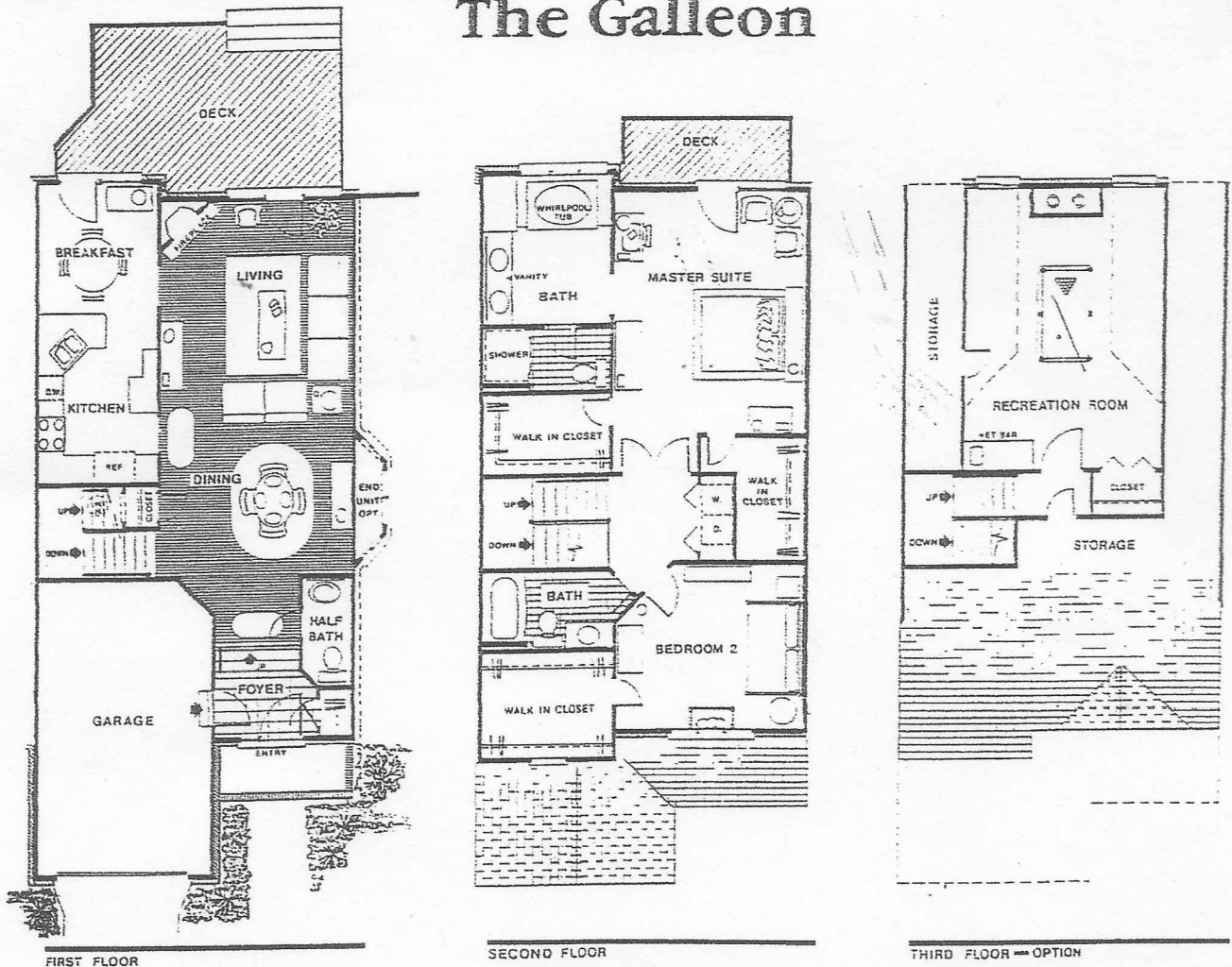


1st LEVEL

2nd LEVEL



The Galleon



Find your dream home in a two or three story, two bedroom, two-and-one-half bath condominium... the Galleon.

- Fireplace in living room
- Deck or patio on two floors
- Whirlpool tub in master bath
- Dome ceiling and fan in kitchen
- Insulated Pella windows
- One car garage complete with electric door opener
- Energy efficient heat pump heating and cooling system

- Jenn-Aire kitchen range, dishwasher, trash compactor and disposal.
- Electric door locks on front door with intercom system speakers on each floor
- Maintenance free exterior
- Quiet location along Chesapeake Bay
- Vacuflo central vacuum system (optional)
- Fireplace in master suite (optional)

(E)